

laplink.

# PCsyncHost

Fast, Easy, and Secure File Transfer and Synchronization

## Quick Start Guide (for Mac)

### Laplink Software, Inc.

**Customer Service/Technical Support:**

Web: <http://www.laplink.com/help>

E-mail: [CustomerService@laplink.com](mailto:CustomerService@laplink.com)

Tel (USA): +1 (425) 952-6001

Fax (USA): +1 (425) 952-6002

Tel (UK): +44 (0) 870-2410-983

Fax (UK): +44 (0) 870-2410-984

Laplink Software, Inc.  
14335 NE 24th Street, Suite 201  
Bellevue, WA 98007  
U.S.A.

Copyright / Trademark Notice

© Copyright 2010 Laplink Software, Inc. All rights reserved. Laplink, the Laplink logo, Connect Your World, PCsync, and SpeedSync are either registered trademarks or trademarks of Laplink Software, Inc. in the United States and/or other countries. Other trademarks, product names, company names, and logos are the property of their respective holder(s). SpeedSync technology is covered by U.S. Patent No. 5,446,888 and related filings in the U.S. and other countries.

**laplink**  
connect your world

Laplink PCsync is a file transfer and synchronization solution that allows you to access files and synchronize folders between your two computers.

PCsyncHost gives the option of file transfer and synchronization between a Windows PC and a Mac. The standard PCsync application is installed and run on the Windows PC, and PCsyncHost is installed and run on the Mac.

**Note: To transfer or synchronize between a Windows PC and a Mac, PCsyncHost is used to configure certain connectivity settings on the Mac. Then, the specific transfer or synchronization is set up and run from the Windows PC using PCsync.**

**Running the transfer or synchronization from the Mac is not supported with this version of PCsyncHost.**

**See the PCsync User Guide on Laplink's Web site for more information about setting up a transfer or synchronization from the Windows PC:**

<http://www.laplink.com/pcsync>

## Glossary

**Host computer** – The computer **to** which you will connect in a PCsync session.  
When connecting to a Mac from a Windows PC, the Mac is always the Host.

**Guest computer** – The computer **from** which you will connect to the Host computer in a PCsync session.  
When connecting to a Mac from a Windows PC, the PC is always the Guest.

**Synchronization** – The procedure that copies the most recently changed version of a file from one folder to another.  
The outcome of synchronization will depend on the direction of the transfer and the conflict resolution rules that you specify.

**Note: See the PCsync User Guide on Laplink's Web site for more information about setting up a transfer or synchronization from the Windows PC:**

<http://www.laplink.com/pcsync>

## System Requirements

- Mac OS X v10.5 Leopard and v10.6 Snow Leopard
- 512 MB of RAM
- 6 MB hard disk space

## Installing PCsyncHost

You must install PCsyncHost on each Mac to which you want to connect using PCsync. For details on the maximum number of installations allowed, refer to the End User License Agreement.

**Note: PCsync must also be installed on your PC in order to connect from your PC to your Mac. See the PCsync User Guide for PC for installation instructions:**

<http://www.laplink.com/pcsync>

**IMPORTANT: Before installing or running PCsync, quit all other applications running on your Mac.**

1. **Download File:** Double-click on the **PCsyncHostDist.dmg** disk image to access the installer package. Then, double-click on the **PCsyncHost.pkg** installer package to start the installation process, and continue to step 2.

**CD:** Insert the PCsync CD into the CD-ROM drive, and double-click on the PCsync CD icon on the desktop.

Once the CD opens, double-click on the **PCsyncHostDist.dmg** disk image to access the installer package (the disk image is located in the root directory of the CD). Then, double-click on the **PCsyncHost.pkg** installer package to start the installation process, and continue to step 2.

2. Click **Continue** and follow the on-screen prompts. Then click **Install** to complete the installation.

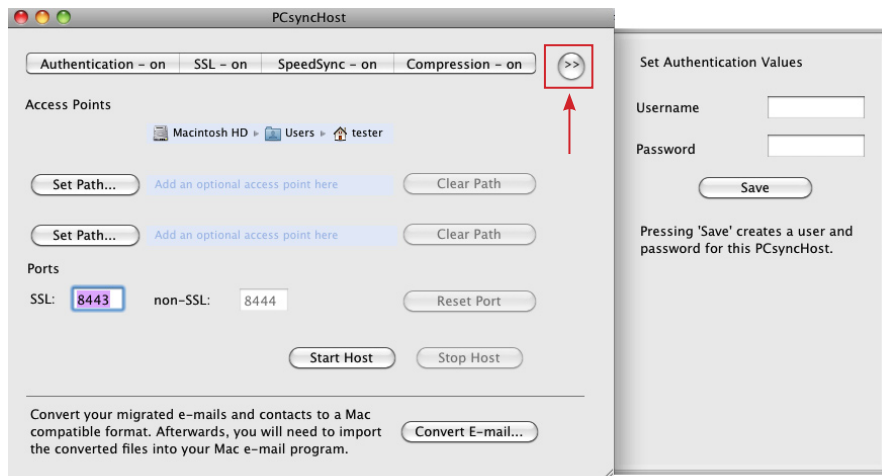
**Note: During installation, you will see a screen regarding PCsyncHost's "README" file. For most users, Laplink recommends that you refer instead to this PCsyncHost Quick Start Guide that you are currently reading. This guide includes all necessary installation and use instructions, and is better suited for reference by the average user.**

- After installation is complete, navigate to your **Applications** folder and double-click **PCsyncHost** to start the application. Continue to the next section to configure the PCsyncHost connectivity settings.

## Configuring PCsyncHost

PCsyncHost allows you to configure how PCsync on the Windows PC will connect to your Mac. Review the settings in PCsyncHost and confirm that they are correct for your connection needs.

**Note:** To change the settings on the four segmented menu tabs, click on the desired tab and choose "On" or "Off" from the menu that appears.



### Authentication

- Default:** Set to "On". The user at the Windows PC must enter the correct Username and Password before they can connect to the Mac.

**IMPORTANT:** By default, no Username or Password is set. You must set the Username and Password (see next section) before an authenticated connection is possible.

Alternately, you may set Authentication to "Off" and no Username or Password will be required.

- Set Username and Password:** Click the **Toggle** arrow button in the upper right corner of the window to open the **drawer tray** (shown in picture in previous column). Enter the desired Username and Password and click **Save**.  
**Note:** Even if the authentication information has been previously set, Username and Password will not be displayed for security reasons. If you enter a new Username and Password and click 'Save', the previously entered information will be overwritten.
- Use with Different Connection Methods:** The PCsync user will be prompted to enter the Username and Password to connect to the Mac, whether connecting by network, Laplink USB cable or Laplink Ethernet cable.

### SSL (Secure Connection)

- Default:** Set to "On". A secure connection is made when the Windows PC connects to the Mac.
- Use:** SSL ensures that data sent between the PC and the Mac is secure, using the same technology found in Internet banking.
- Ports:** The default network port numbers are used, which match the default configuration of the port numbers in PCsync on the Windows PC.

**Note:** Most users will not need to change the default port numbers. If you do choose to change from the defaults, be sure to also change the port numbers in PCsync on the Windows PC so they match the numbers in PCsyncHost.

### SpeedSync

- Default:** Set to "On". SpeedSync is used in file transfers and synchronizations.
- Use:** Minimizes the time used in file transfers and synchronizations by only transferring the changed portion of files.

### Compression

- **Default:** Set to "On". Compression is used in file transfers and synchronizations.
- **Use:** Temporarily minimizes the size of files during transfers or synchronizations, decreasing the time needed to complete these actions.

### Access Points

- **Default:** A single access point is set to the current user's home directory. Click the applicable **Set Path** button to add additional access points. Up to two additional access points may be set up.

**Note:** The default access point is fixed and cannot be changed.

The PC will only have access to the current logged-on Mac user's files. Make sure that the correct Mac user is logged on before connecting to the Mac from the PC.

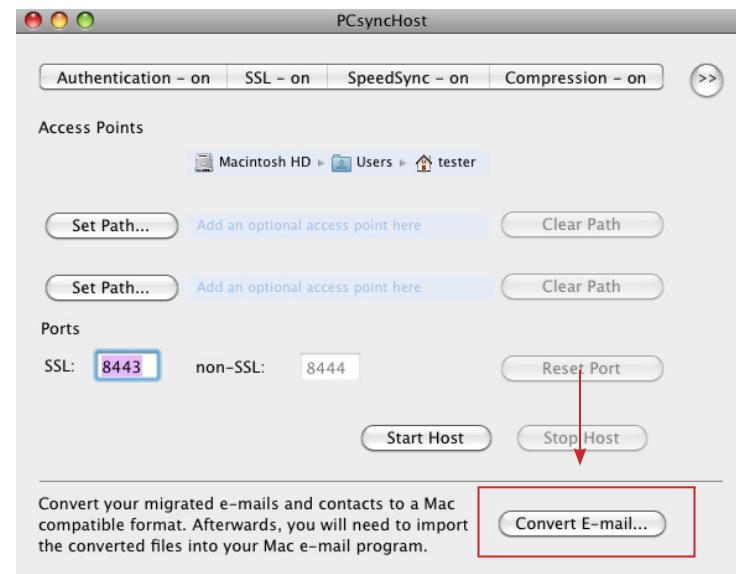
- **Use:** An access point allows the PCsync user to access files and folders within the specified directory on the Mac in order to perform transfers and synchronizations.

**Note:** The PCsync user will be able to see and manipulate files, directories and subtrees in an access point.

## Allowing Access to PCsyncHost

**Note:** To connect to PCsyncHost from a Windows PC, you must first install PCsync on the PC, run the application, and create a new connection as described in the PCsync User Guide:

<http://www.laplink.com/pcsync>



To enable access to PCsyncHost for the PCsync user, click the **Start Host** button. To disable access, click the **Stop Host** button.

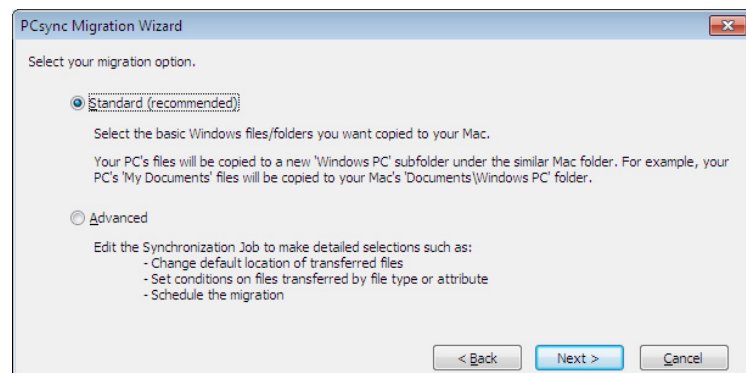
**IMPORTANT:** If you exit PCsyncHost, access is automatically disabled.

The PCsync user will not be able to access PCsyncHost again until PCsyncHost is restarted and the 'Start Host' button is clicked.

## Migration Wizard (Set Up on PC)

The Migration Wizard is a PCsync tool used on the PC to assist you with setting up the initial migration (copy) of files from your PC to your Mac. Once you have completed the Wizard, PCsync will create a Synchronization Job, which will run at the end of the Wizard to complete the migration. This Synchronization Job will be saved allowing files transfers from your PC to your Mac to be completed easily in the future.

Once you create the initial connection to the Mac, the Migration Wizard will open on the PC:



- **Standard** - Select this option to choose the basic Windows files/folders you want copied to your Mac. Your PC's files will be copied to a new "Windows PC" subfolder under the similar Mac folder (Ex., your PC's "My Documents" files will be copied to your Mac's "Documents\Windows PC" folder).

Location of your files on the Mac after the migration:

**Note: All files will be organized by user and located under /Users/<user name>/.**

- **My Documents:** /Documents/Windows PC/
- **My Music:** /Music/Windows PC/
- **My Pictures:** /Pictures/Windows PC/
- **My Videos:** /Movies/Windows PC/

- **Desktop Wallpaper:** /Documents/Windows PC Wallpaper/
- **My Desktop Files:** /Desktop/Windows PC/
- **Microsoft E-mails:** /Library/Mail/Windows PC/<e-mail client name>/ (i.e., if you use Outlook on your PC, the file path on the Mac will be /Library/Mail/Windows PC/Outlook/)

**Note: If you migrated e-mails from your PC to your Mac, follow the steps in the 'E-mail Format Conversion' section (next). Your migrated e-mails will be converted to a format that can be imported into the Mac's e-mail application.**

- **Advanced** - Select this option to make advanced changes to the Synchronization Job to change the location of transferred files, set conditions on the file migration, and/or schedule the migration.

**Note: The PCsync Migration Wizard is run on the PC to set up the initial migration from the PC to the Mac.**

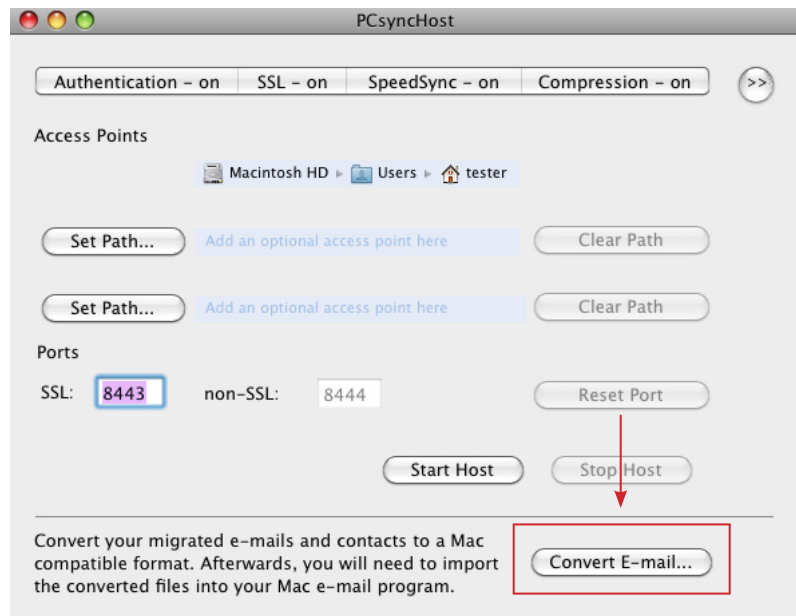
**See the PCsync User Guide on Laplink's Web site for more information about using the Migration Wizard to set up the migration:**

<http://www.laplink.com/pcsync>

## E-mail Format Conversion

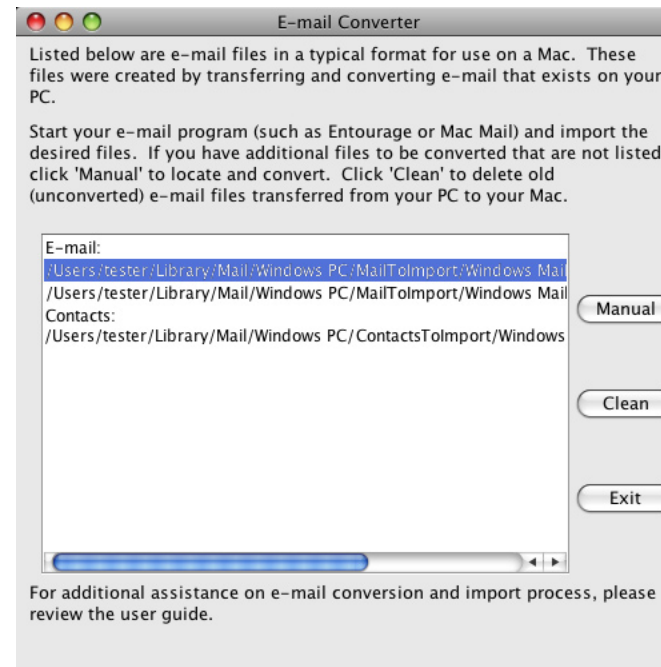
If you migrated e-mails and/or Outlook contacts from your PC to your Mac, these e-mails and contacts must first be converted to a Mac format before they can be imported into your Mac's e-mail program.

Click the **Convert E-mail** button on PCsync's main window to start the e-mail conversion:



Once the e-mail conversion has completed, you will see the E-mail Converter window, which lists the location of the converted e-mail and contact files.

**Note: If you have additional e-mail or contact files to be converted that are not listed, click 'Manual' to locate and convert these files.**



Then, import the e-mails and contacts into your Mac's e-mail program and/or address book.

**Note: The location of the converted e-mails and/or contacts is listed in the 'E-mail Converter' screen (see above).**

- **Importing E-mails:** As an example, in Mac Mail, go to the **File** menu and click **Import Mailboxes**. Follow the on-screen instructions, making sure to select "mbox files" when asked what file type you are importing.

Or, as a second example, in Entourage 2008, go to the **File** menu and click **Import**. Click **Contacts or messages from a text file**, and click the right arrow button. Then, click **Import messages from an MBOX-format text file**, and click the right arrow button. Follow the on-screen instructions.

If you have a different e-mail program on your Mac than these examples, please see the user guide for that e-mail program for instructions on how to import MBOX-format e-mail files.

- **Importing Contacts:** As an example, in the Mac Address Book, go to the **File** menu and click **Import**, choosing to import a vCard.

Or, if using Entourage, open the Mac Finder and navigate to the location where the converted contacts were saved. Drag the vCard file (i.e., file extension .vcf) from its current location to the Contacts pane in Entourage.

If you have a different program on your Mac than these examples, please see the user guide for that program for instructions on how to import VCF-format contact files.

## Additional Assistance

**Live Chat** - Engage in a live chat online with a Customer Service or Technical Support Representative at the link below, during the hours listed on the Web page:

<http://www.laplink.com/contact/mychat.html>

**E-mail:** [CustomerService@laplink.com](mailto:CustomerService@laplink.com)